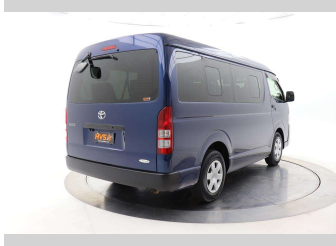


# 2016 Toyota Hiace 2.7L 10 Seater



Purchase Price

\$38,450

Includes GST

Excludes on-road costs of \$395

Indicative repayments

\$190.17 per week\*

Based on a 60 month term & 10% deposit.

Total repayments (260) = \$53,328.62

finance

NOW

AUTO FINANCE DIRECT

Gain peace of mind with Mechanical Breakdown Insurance. Ask us how.

Protecta

INSURANCE

an ASSURANT company

Top features

» ABS Braking

» Air Bag - Dual front

» Air Conditioning

» Chain Drive Motor

» Electric Mirrors

» Electronic stability control

» Rear Wiper

» Reverse Camera

» Stereo

Body Style

4 door, Van

Odometer

31,000 km

Engine

2700 cc

Fuel Type

Petrol

Transmission

AT, Rear Wheel

Wheels

-

VIN

7AT0H60FX24046107

Interior

Grey, Cloth

Safety

-

Reg No.

-

Ext Colour

Dark Blue

History

-

Seats

10 seats, Cloth

CO2 Emissions

-

Energy Economy

-

Stock ID: 1642468

HVS

MOTORS

HVS Timaru | Phone 0800 487 668 | Email sales@hvsmotors.com

1 Hobbs St, Timaru 7910, New Zealand

www.hvsmotors.co.nz

4.57

1541 reviews

\* HVS Timaru is not a lender nor a financial adviser. Any amounts displayed should not be seen as an offer of finance or taken as financial advice. The interest rate, fees and loan term used in this calculation may not actually represent those available from lenders. Actual interest rates, fees and loan terms will vary per lender and are typically based on an assessment of your credit risk and responsible lending criteria. Any repayment amounts displayed are indicative only and have been calculated using several other indicative inputs. The interest rate used in this calculation is an arbitrary 13.95%, however exact interest rates vary per lender. The term of the loan used in this calculation is 60 months. Exact terms available vary per lender although options typically include 6, 12, 18, 24, 36, 48 and 60 months. This calculation also includes a typical mandatory fee charged by lenders. This is a one-off establishment fee of \$495.00. Typically, this fee can be paid upfront or, as in this calculation, be capitalised over the contract term, ie. included in the loan amount. This fee can vary per lender and other non-mandatory fees and charges may also apply. The total amount of repayments has been calculated by multiplying 260 weekly repayments (based on a 60 month term) by the weekly repayment amount of \$190.17 which equals \$53,328.62. This calculator does not consider any of your own personal circumstances and we strongly suggest you seek budgeting advice prior to committing to any loan contract. Responsible lending criteria and lender terms and conditions will likely apply to any finalised loan contract. Proof of security and/or vehicle insurance may also be required before proceeding.

Generated 08 May 2024 15:21