

2013 Toyota Prius PHV S



HVS MOTORS

FINANCE THIS CAR FROM

\$70.94 PER WEEK*

*Finance calculation based on a 60 month term, 10% deposit and with an example annual fixed interest rate of 13.95%. Actual interest rate may be higher or lower, includes an establishment fee of \$495.00. (1st term only) interest coverage of \$100,000. Interest only, not an offer of finance. Terms, conditions and lending criteria apply.

HVS ELECTRIC

BA/NZ Type 1

Thanks to the structure this portable EV charger has an excellent IP protection level of IP65. Anti corrosion and weatherproofing.

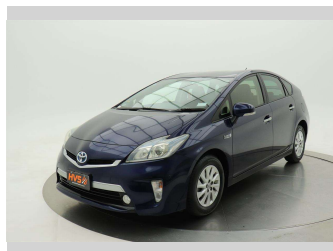
1 Year Warranty

Confidence transferred from highest grade materials in a portable charger.

Easy installation, plug and play. It delivers all the safety and smart charging features you need to make home charging easy, reliable and cost-effective.

NZ 2 PIN HOME CHARGING CABLE INCLUDED WITH ALL EVS!

ALL OTHER MAJOR CHARGING CABLES AVAILABLE.



Purchase Price

\$13,750

Includes GST
Excludes on-road costs of \$395

Indicative repayments

\$70.94 per week*

Based on a 60 month term & 10% deposit.
Total repayments (260) = **\$19,857.99**

finance NOW
AUTO FINANCE DIRECT

Gain peace of mind with Mechanical Breakdown Insurance. **Ask us how.**

Protecta INSURANCE
an ASSURANT company

Top features

- » ABS Braking
- » Air Bag - Front + side
- » Air Conditioning
- » Alloy Wheels
- » Chain Drive Motor
- » Child seat anchor poin...
- » Electric Mirrors
- » Electronic stability c...
- » Fog Lights
- » Heated Seats
- » Rear Wiper
- » Reverse Camera
- » Stereo

Body Style
5 door, Hatchback

Odometer
69,000 km

Engine
1800 cc

Fuel Type
Hybrid

Transmission
AT, Front Wheel

Wheels
-

VIN
7AT0H637X23044141

Interior
Black, Cloth

Safety



Based on 2023 UCSR rating for 09-16 models

Reg No.

-

Ext Colour
Blue

History

-

Seats
5 seats, Cloth

CO2 Emissions
★★★★☆
59 grams/km

Energy Economy
★★★★☆

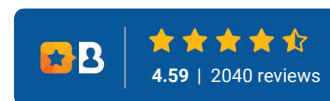
Annual fuel cost not available
2.6L per 100km

Actual figures and cost per year will vary based on proportion of hybrid mode driving and battery charging schedule. Emissions and Energy Economy figures standardised to 3P WLTP.

Stock ID: 1641638



HVS Dunedin | Phone 0800 487 682 | Email sales@hvsmotors.com
250 Kaikorai Valley Rd, Bradford, Dunedin 9011, New Zealand
www.hvsmotors.co.nz



*HVS Dunedin is not a lender nor a financial adviser. Any amounts displayed should not be seen as an offer of finance or taken as financial advice. The interest rate, fees and loan term used in this calculation may not actually represent those available from lenders. Actual interest rates, fees and loan terms will vary per lender and are typically based on an assessment of your credit risk and responsible lending criteria. Any repayment amounts displayed are indicative only and have been calculated using several other indicative inputs. The interest rate used in this calculation is an arbitrary 13.95%, however exact interest rates vary per lender. The term of the loan used in this calculation is 60 months. Exact terms available vary per lender although options typically include 6, 12, 18, 24, 36, 48 and 60 months. This calculation also includes a typical mandatory fee charged by lenders. This is a one-off establishment fee of \$495.00. Typically, this fee can be paid upfront or, as in this calculation, be capitalised over the contract term, ie. included in the loan amount. This fee can vary per lender and other non-mandatory fees and charges may also apply. The total amount of repayments has been calculated by multiplying 260 weekly repayments (based on a 60 month term) by the weekly repayment amount of \$70.94 which equals \$19,857.99. This calculator does not consider any of your own personal circumstances and we strongly suggest you seek budgeting advice prior to committing to any loan contract. Responsible lending criteria and lender terms and conditions will likely apply to any finalised loan contract. Proof of security and/or vehicle insurance may also be required before proceeding.